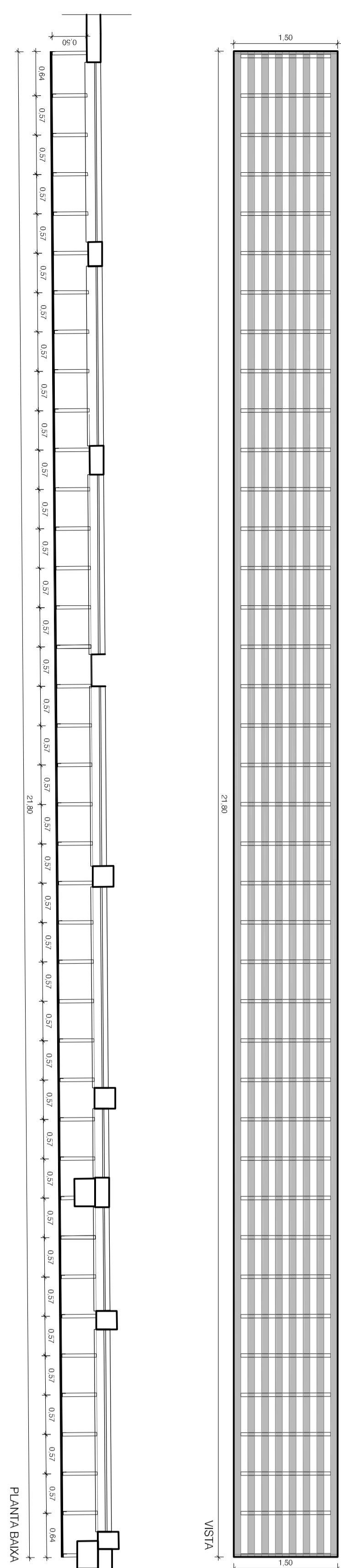


BRISSES

BRISSE JARDIM/IA BARBÉFICA

21,88x1,50m

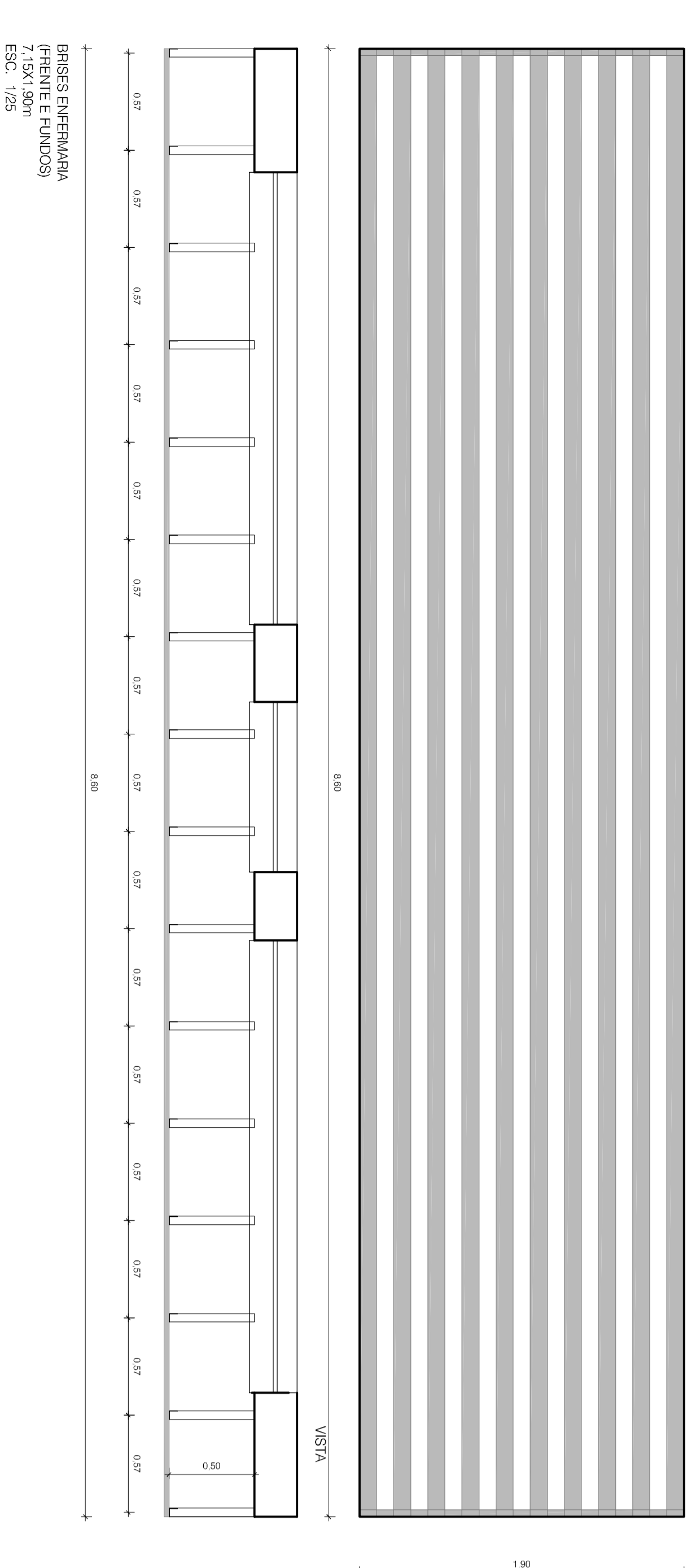
ESC. 1/50



BRISSE CORANTOROS SQUARE DA SAÚDE (FRONTE E FUNDOS)

7,12x1,10m

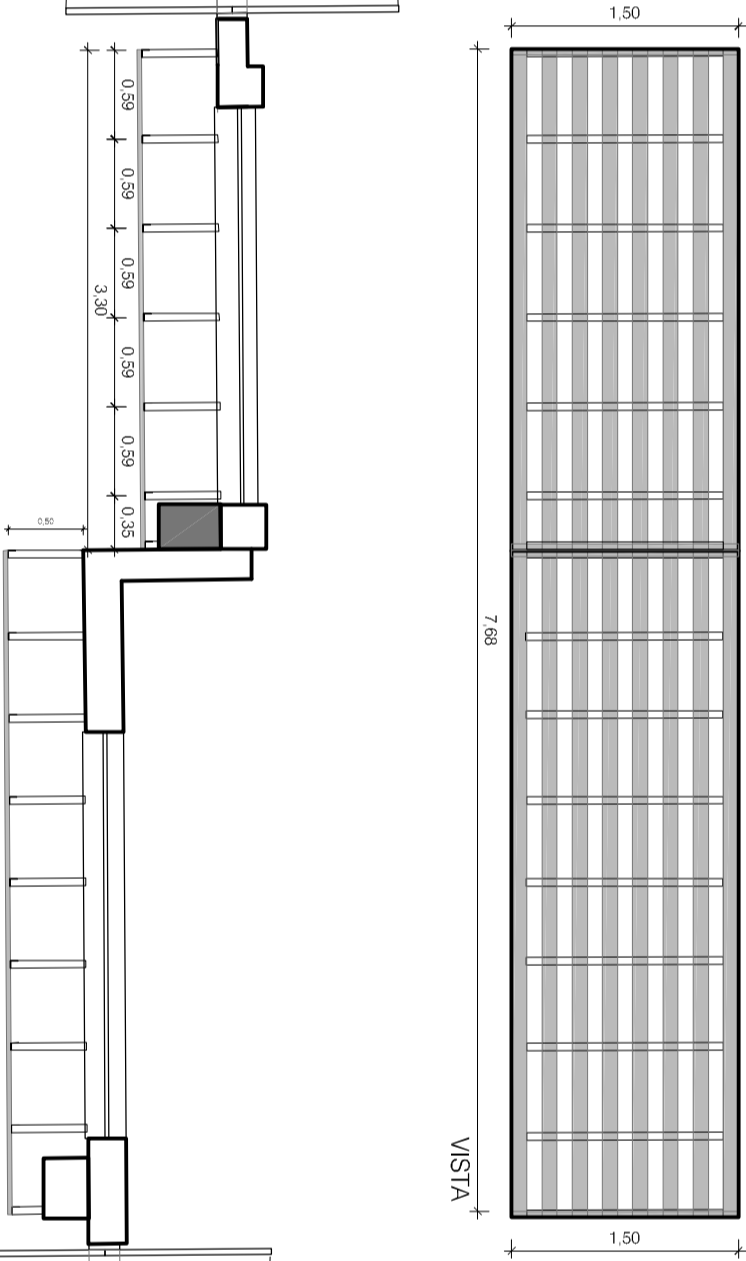
ESC. 1/50



BRISSE JARDIM/IA BARBÉFICA

7,68x1,50m

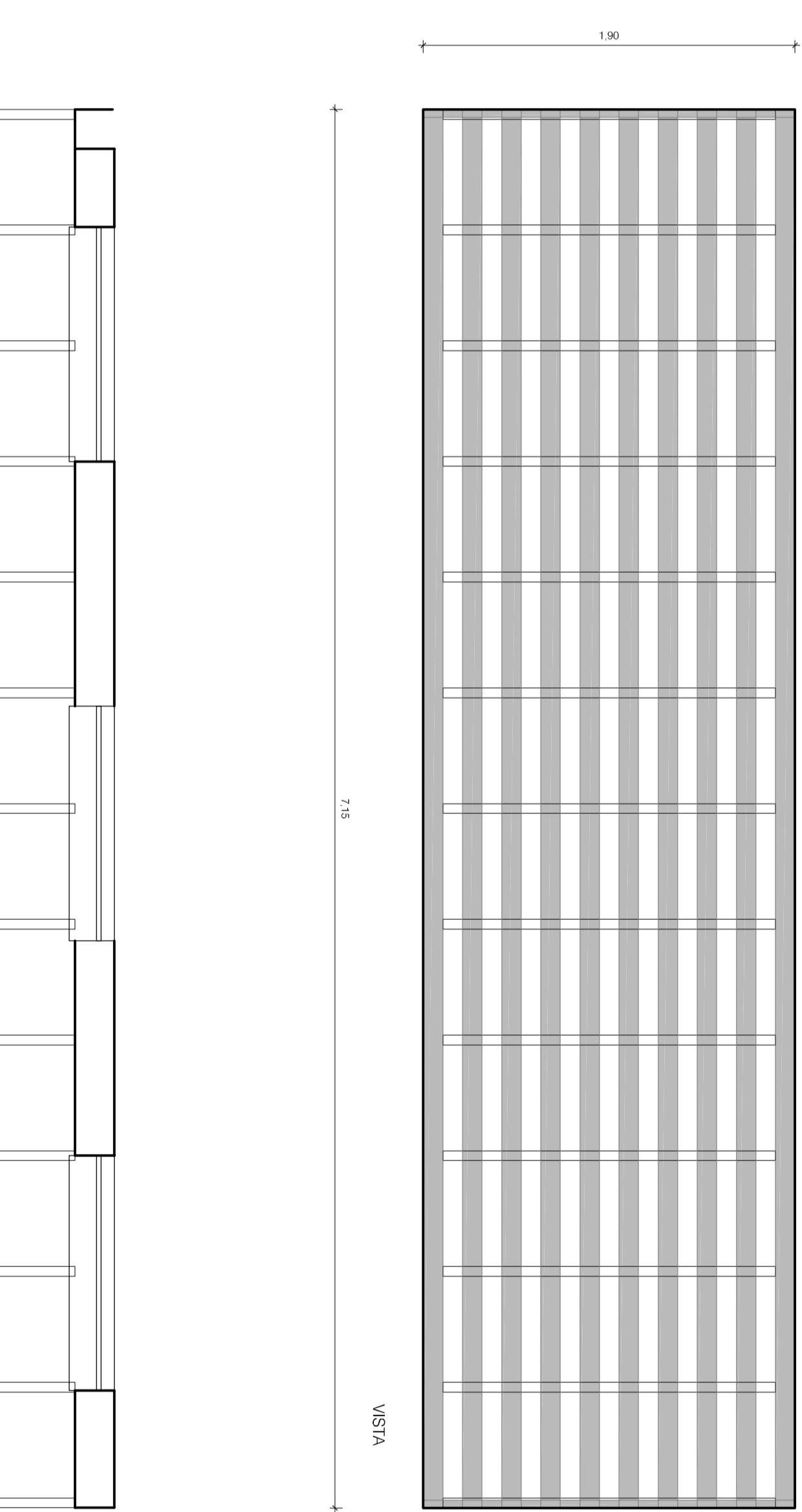
ESC. 1/50



BRISSE ENDOSCÓPIA

7,12x1,10m

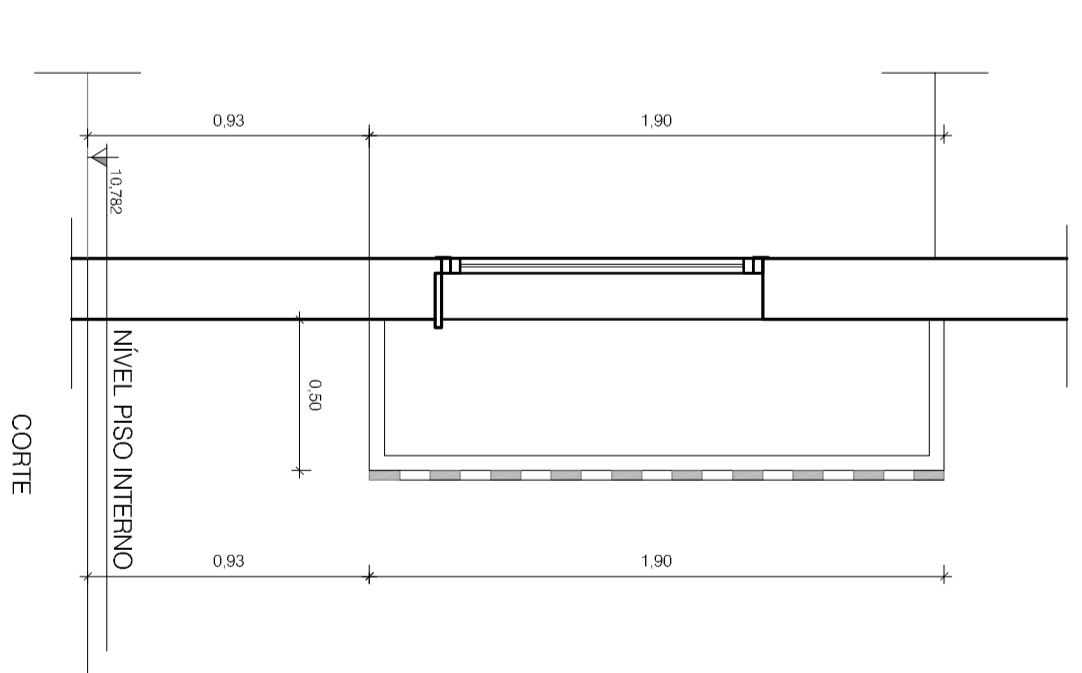
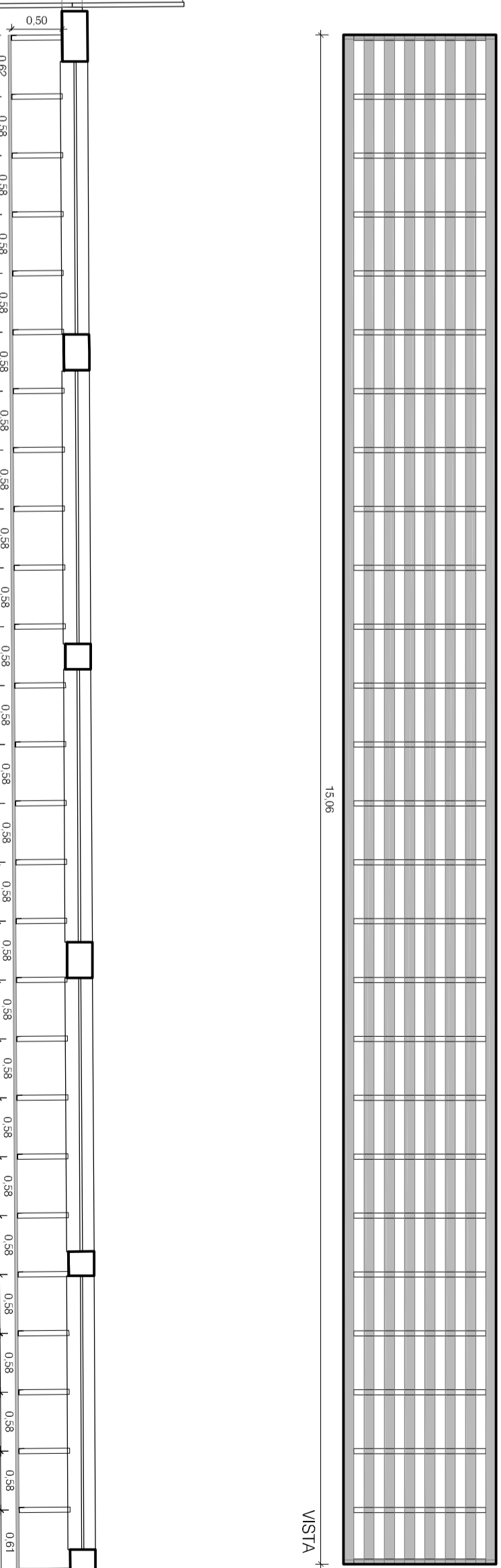
ESC. 1/50



BRISSE JARDIM/IA BARBÉFICA

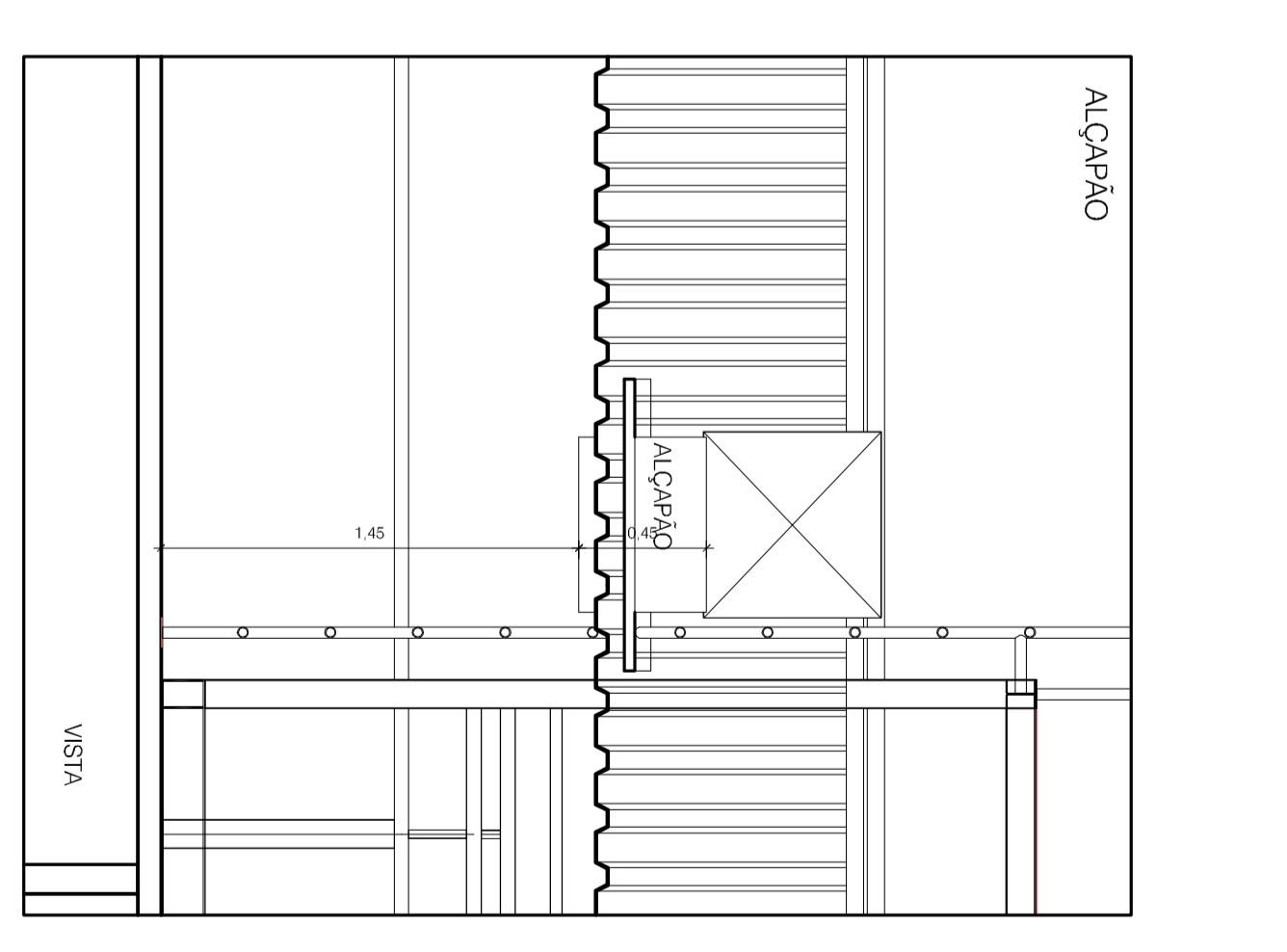
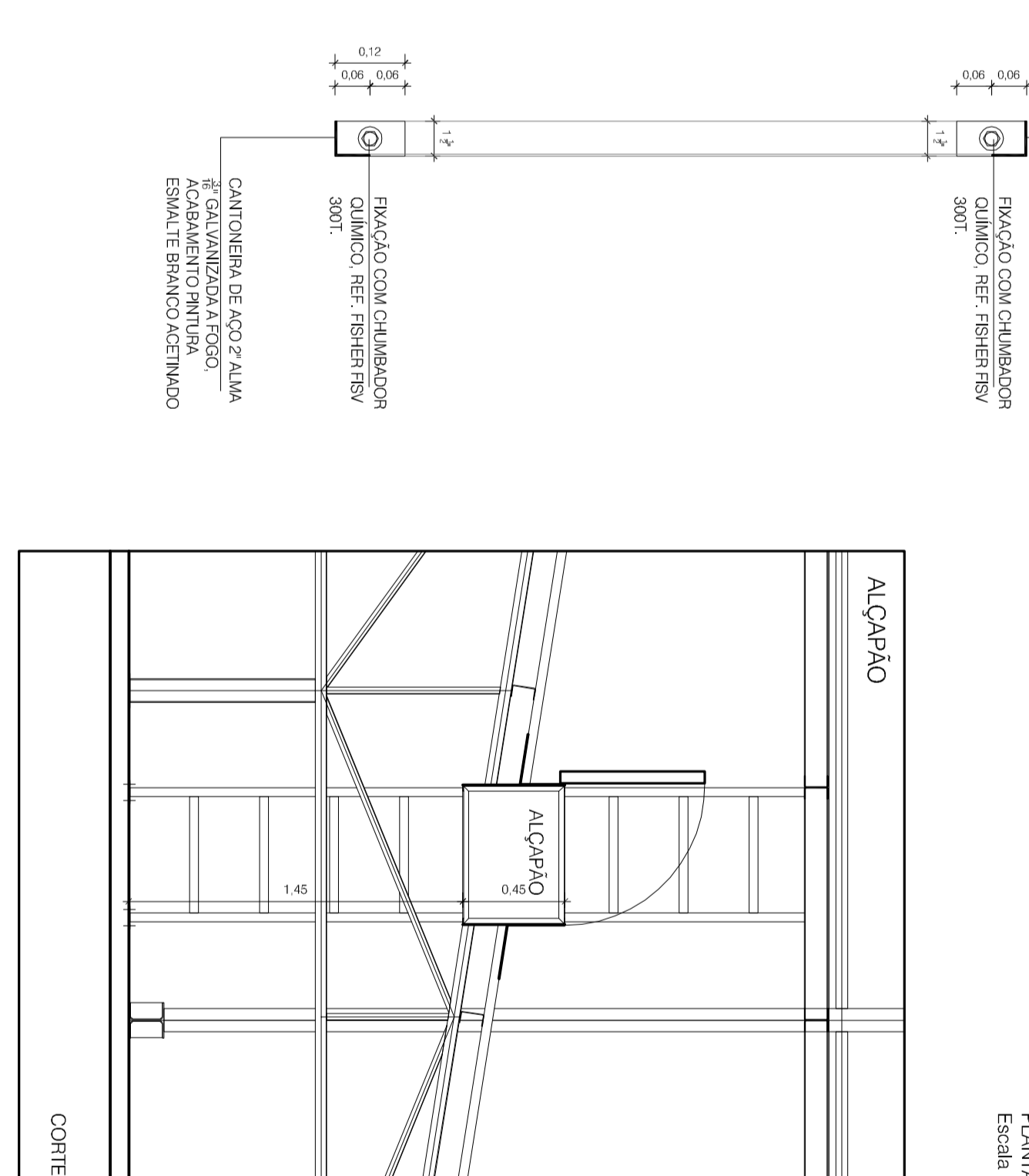
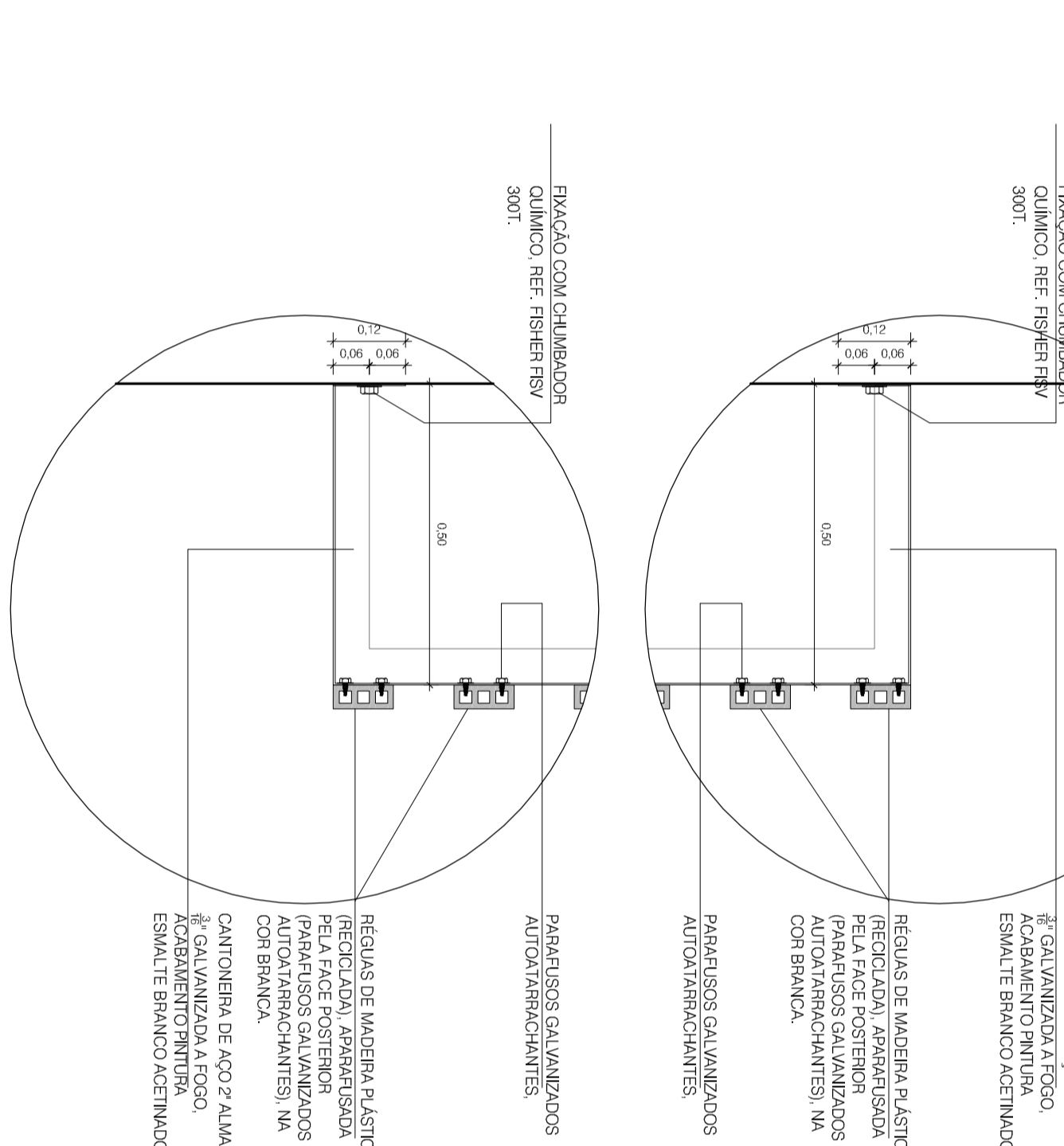
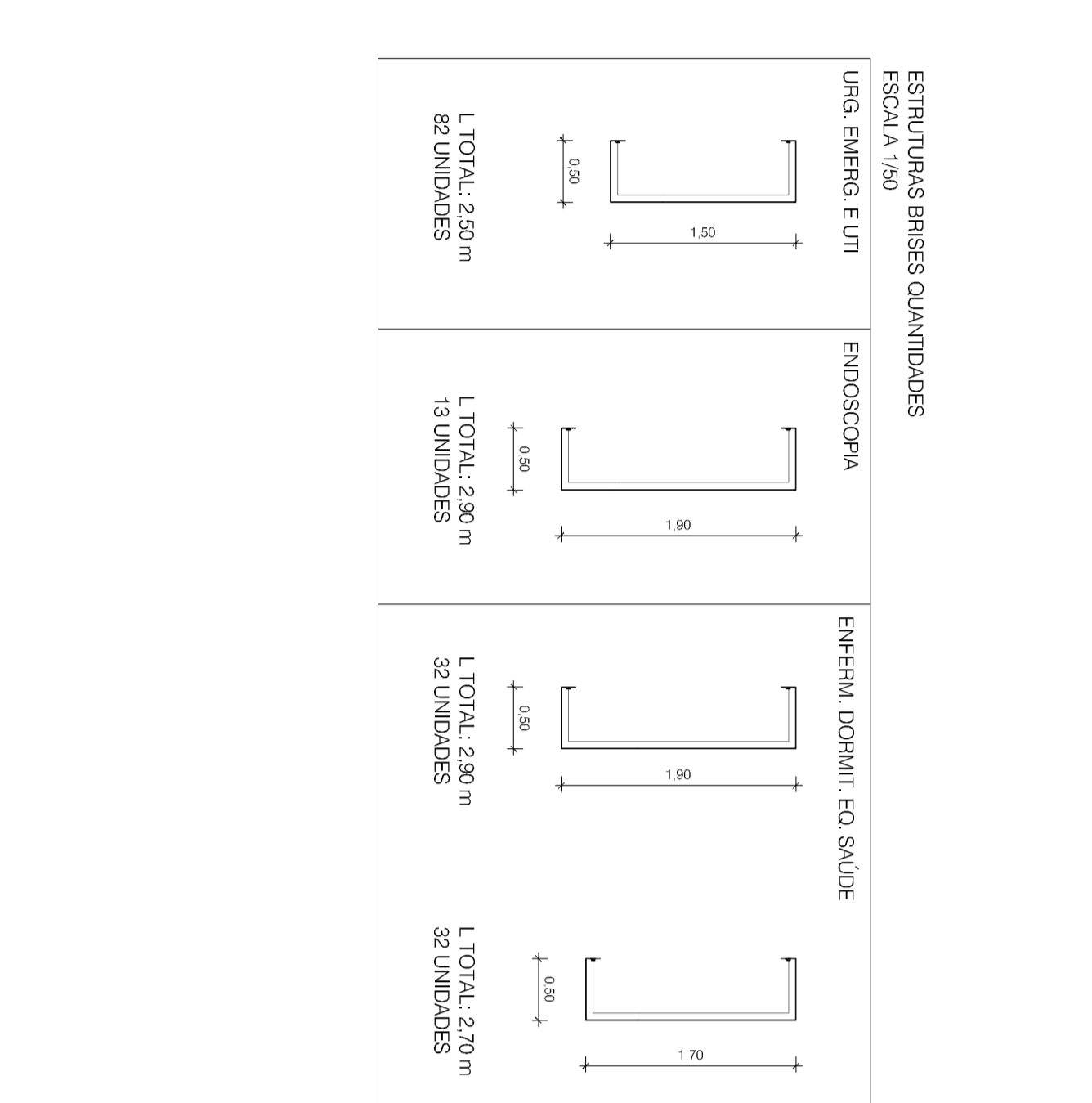
21,88x1,50m

ESC. 1/50



BRISSE-SOLTEIS EM REPOSO DE MADEIRA PLÁSTICA MATERIAL RECICLADO, REFERÊNCIA DE MARCA VALLINDE, FIBRAKAL, ECOMIX, MADIFLAST OU SIMILAR. EXCETO EM ESTRUTURA DE AÇO, ANCORADA NA LAJE VERTICAL DOS PISOS. ESTRUTURA E PÊRSIS EM COPOLÍMERO DE ACRÍLICO. OS COMPONENTES DE TIPO DO REPOSO INDICADO SÃO FABRICANTE.

COBERTURA EM TELHAS TRAVEZÕES, UNAS E SEM ACRÉSCIMOS. TIPO ABRIGADO COM REPERTE PARA ALARGAR O ESCOPO DO PÊRSIS E CHAVAS DE AÇO INOXIDA. PISOS A ESTRUTURA DA COBERTURA, AS PASSELAGENS (ALÇAPÕES) SERÃO ESTRUTURADOS COM PÊRSIS DE AÇO INOXIDA, ASSIMEM, PORTINHOLA EM CHAPA DE AÇO INOXIDA, DILATANTE, COM DOBRADIÇAS E TRAVESAS TAMBÉM EM AÇO INOXIDA. UTILIZAR ACESSÓRIOS DE PÊRSIS NO CANTO DO PÊRSIS, REFERÊNCIA KERR-OMITAL. OU AQUIVALES TELHAS, VENEZ COM PÊRSIS E VENEZAS POLIURETOS PÊRSIS PARA COBERTURAS METÁLICAS.



Project information including company name (Torres Garcia), address (Fundação Hospitalar Getúlio Vargas), and contact details (phone number, website).